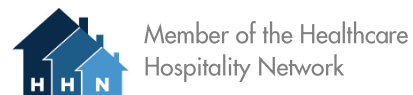


Hospitality House of Tulsa
1135 S. Victor Avenue
Tulsa, OK 74104
(918) 794-0088 | www.hhtulsa.org

From Saint Francis Hospital: Go North on Yale Ave for 3 miles. Take OK-51 W/US-64 W. In 3 miles, take the exit toward Utica Ave/Peoria Ave. Turn North (Right) on Utica Ave. Turn East (Right) on 12th St. Go one block to Victor Ave. and turn North (Left).

From Saint Francis Hospital (no highway travel): Go North on Yale Ave for 5 miles. Turn West (Left) on 11th St. In 2.5 miles, turn South (Left) on Victor Ave. Go one block and HHT will be on your left.

The Hospitality House of Tulsa is a 501 (c)(3) non-profit organization that is funded solely through the generosity of guests, community supporters, corporations, churches and foundations. Your tax-exempt contributions allow The Hospitality House to provide hope, inspiration, and comfort to those facing personal and medical crisis.



Contact Us

918-794-0088

P.O. Box 14472
Tulsa, OK 74159

www.hhtulsa.org/contact



GUEST INFORMATION

We offer a home away from home for families caring for loved ones in medical crisis.

Lodging and support for caregivers and patients traveling to Tulsa for medical care.



Home Away from Home at Victor Ave.

OUR SERVICES

- 13 Guest suites include a living area, warming kitchen, bedroom and private bathroom.
- Prayer support.
- Day Room with private room for napping, handicap accessible shower, meals, laundry room and kids activity corner.
- Washer and dryer free of charge.
- Internet, fax and local calls.
- Snacks provided in rooms.
- Evening meals available, when provided by volunteers.

Volunteers making meals



COMMON QUESTIONS

Who can stay at the Hospitality House?

Family members of adult or pediatric inpatients being treated who live more than 30 miles outside the greater Tulsa area. Also, outpatients and one caregiver (required) who live more than 50 miles outside the greater Tulsa area and who receive daily treatments.

Do guests need a reservation?

Guests must be referred to Hospitality House by a hospital social worker, case manager, nurse, chaplain, or physician. A referral does not guarantee immediate room availability.

How do I receive a referral?

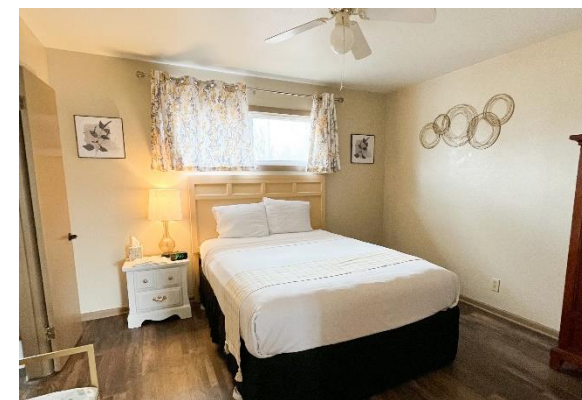
We operate from a waiting list on a first come, first served basis. If your family meets our criteria, have your nurse or case manager call The Hospitality House and place your name on our waiting list. You will be notified by a Hospitality House staff or volunteer when an overnight suite becomes available. You can also call to use Day Room services before a suite is available.

How long can I stay in the Hospitality House?

We have a two week stay limit. If your patient's condition requires a longer stay, please visit with our staff concerning your needs.

Is there a charge to our family?

In order to keep our services available to over 500 families each year, a suggested room donation of \$50/night is in place to help defray the costs of operations. If a family is unable to afford this, they may complete a Family Assistance Program application to help determine the level of room discount they qualify for. Their application will be reviewed immediately and their adjusted suggested donation amount will be approved the same day. No one is turned away based on inability to pay.



Guest Suite Bedroom

GUEST POLICIES

- Guests must be able to care for their own personal needs or have a caregiver staying with them to assist. Half of our suites are upstairs. Please notify the volunteer on duty if climbing stairs is a problem. We will accommodate with downstairs suites based on availability.
- No smoking. Smoking is NOT allowed in the guest suites or anywhere on property at Hospitality House of Tulsa or the hospital campus.
- No pets allowed.
- No illegal drugs, alcoholic beverages, or weapons of any kind are allowed on property or in the guest suites.
- All guests age 16 and older must present valid photo ID card.

Your Home Away From Home